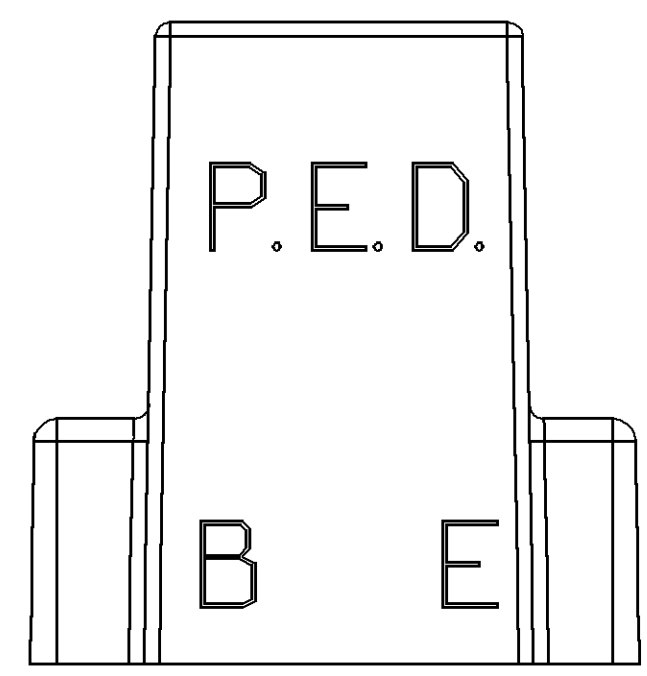
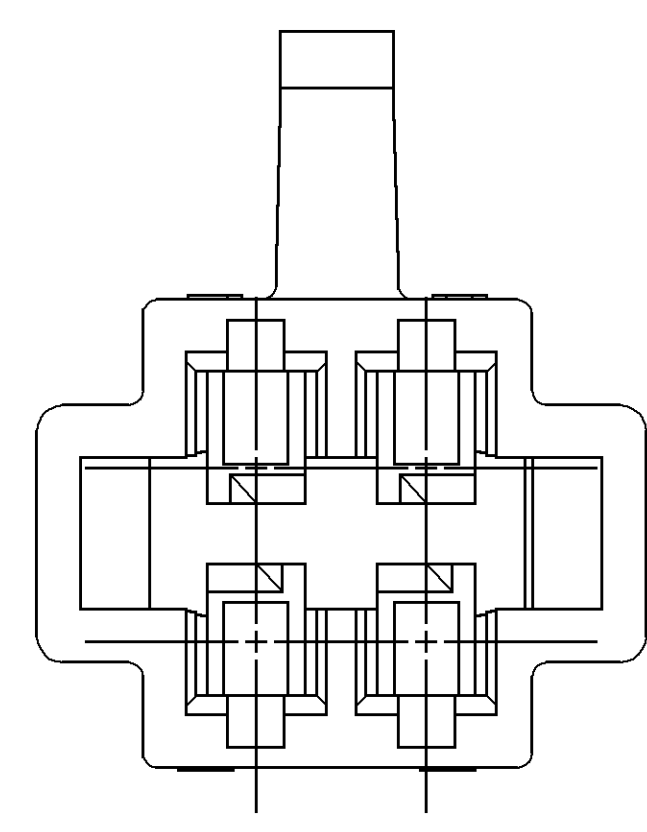
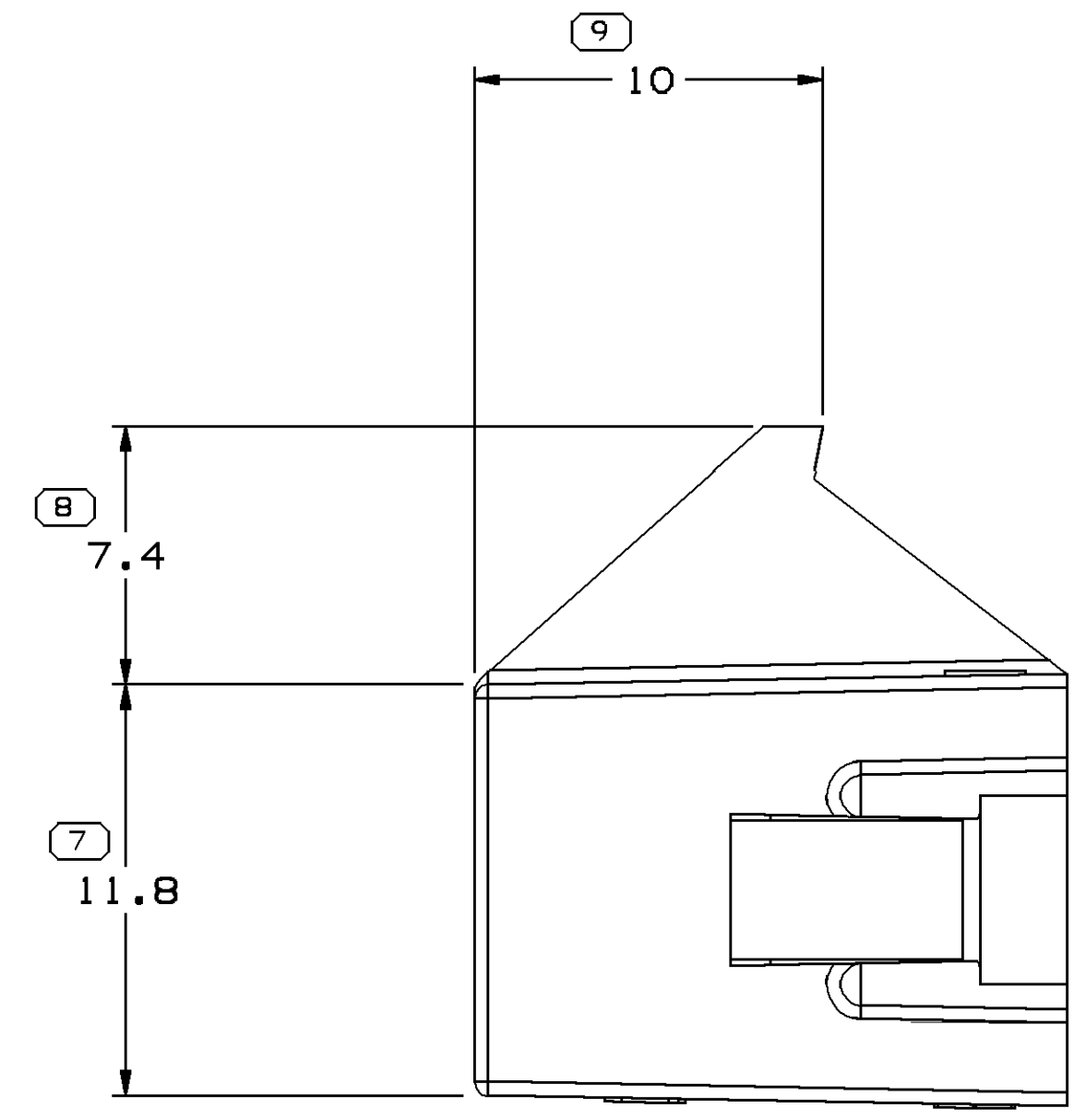
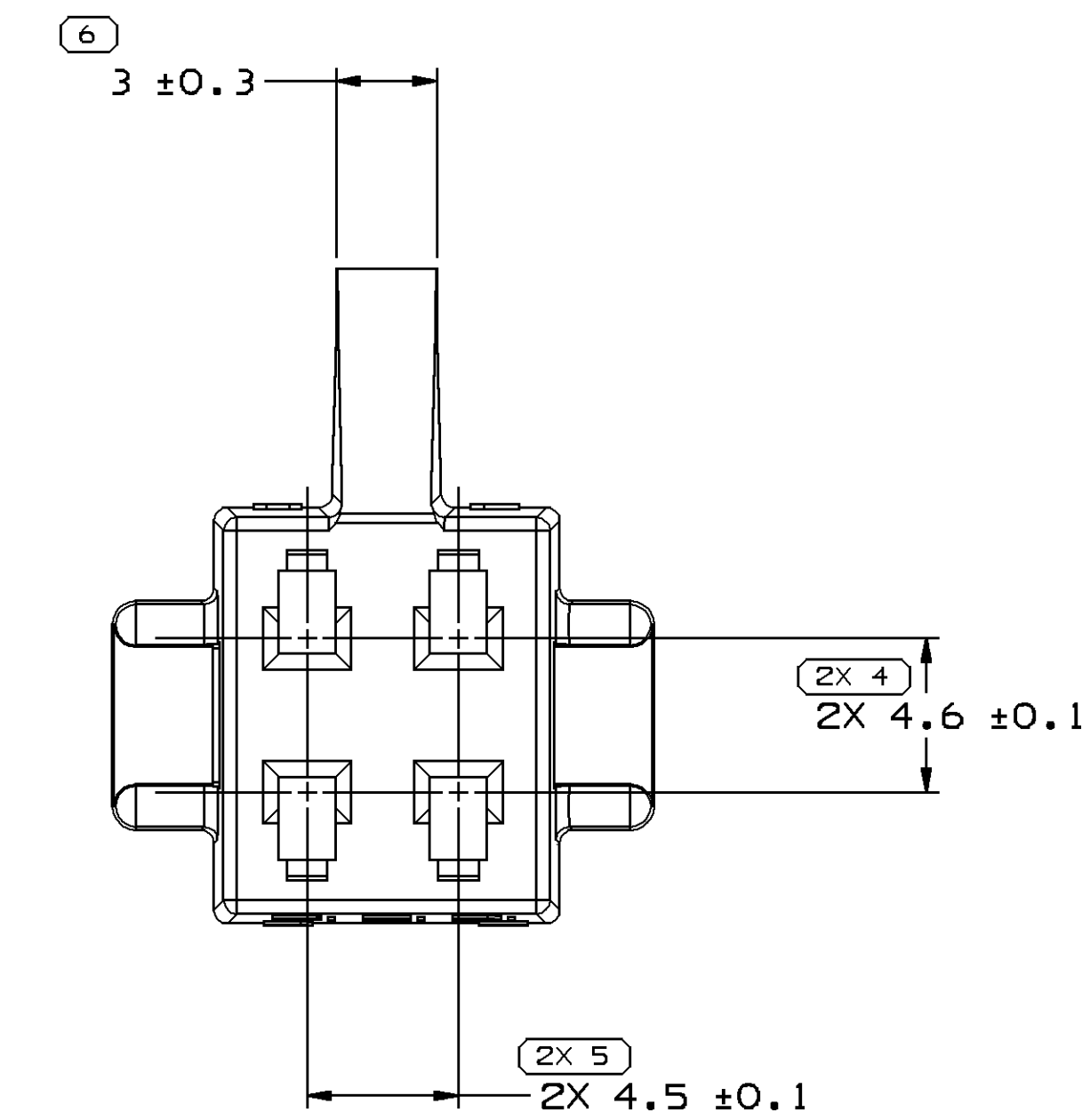
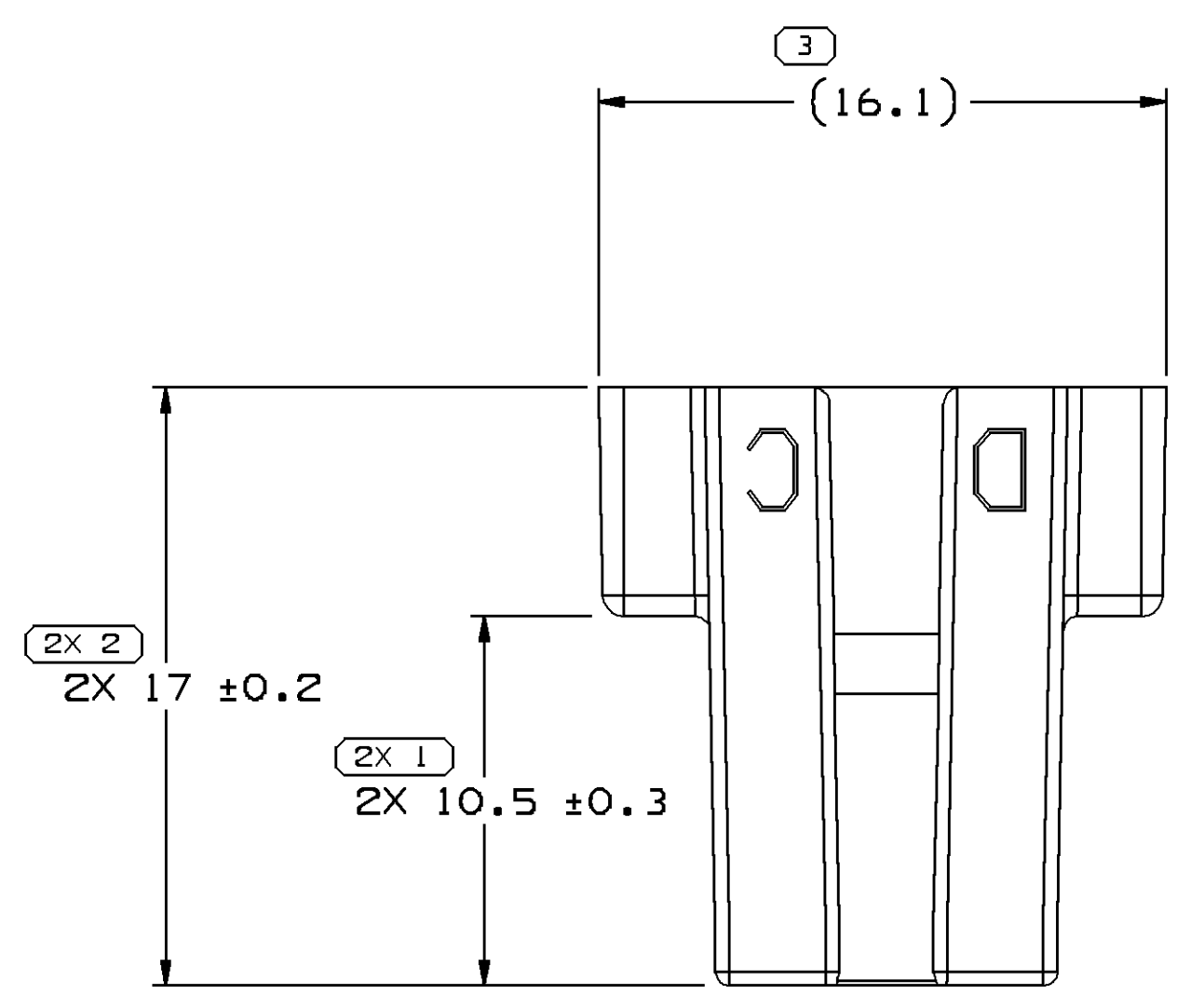


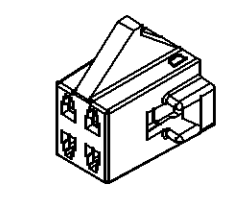
SYMBOL DEFINITION		MISSING SYMBOLS
A DIMENSION WITHOUT AN INSPECTION REPORT SYMBOL () DOES NOT REQUIRE INSPECTION. IT MAY BE CONTROLLED ON THE INDIVIDUAL COMPONENT DRAWING.	TOTAL NO OF INSPECTIONS REQUIRED	13
	LAST NO. USED	9

DWG STATUS		ZONE	REVISION HISTORY		AUTH	DR	CK	APVD
DATE	STG	REV	CHG	N/P				
15AU00	R	C3	-	-				



NOTES

- UNLESS OTHERWISE SPECIFIED AND/OR INDICATED: DIMENSIONS ARE TO FACE OF VIEW SHOWN AND AUTOMATICALLY ROUNDED BY COMPUTER FOR INSPECTION (SEE MATH MODEL FOR PRECISE DIMENSIONS). FOR ALL OTHER DIMENSIONS NOT SHOWN BUT REQUIRED FOR TOOL BUILD, SEE MATH MODEL FOR PRECISE TOOL PATH DATA.
- MATING COMPONENTS OR EQUIVALENT: CONNECTOR 12047864
- THIS PART ACCEPTS THE FOLLOWING COMPONENTS OR EQUIVALENT: CAVITIES TO ACCEPT TERMINAL 12047767
CORE CRIMP MUST BE LESS THAN 1.4 MAX HIGH AND 2.78 MAX WIDE
MAX INSULATION CRIMP MUST BE LESS THAN 2.8 MAX HIGH AND 3.5 MAX WIDE.
USING 16 GAGE CABLE AND MAX INSULATION PVC
SECONDARY TERMINAL LOCK 12047865.
- NON STANDARD CAVITIES DO NOT DUPLICATE.
- THIS PART IS NOT CONTROLLED FOR AUTOMAITC FEEDING.



DELPHI Automotive Systems			
MATERIAL SPEC R0071784 PA66-HS IM GRA MED			
SUBSTANCES OF CONCERN AND RECYCLED CONTENT PER DELPHI-A 10949001			
PART DRAWING			DISTR CODE D
CODE NUMBER 6900	DWG DATE 13JLB3	SCALE 5:1	
OC SPEC	STYLE	VOLUME cm ³ 1.366	
PART GEOMETRY 3D SOLID	UNLESS OTHERWISE SPECIFIED: THIS DOCUMENT IS IN ACCORDANCE WITH ASME Y14.5M - 1994 AS AMENDED BY THE GM GLOBAL DIMENSIONING AND TOLERANCING ADDENDUM - 1997. ALL GEOMETRIC TOLERANCES AND RELATED DATUMS APPLY RFS. RULE #1 (PERFECT FORM AT MMC) DOES NOT APPLY WHEN RELATIONSHIP BETWEEN FEATURES IS ESTABLISHED BY ORIENTATION OR LOCATION TOLERANCES. SEPARATE POSITION CALLOUTS MAY BE GAGED SEPARATELY REGARDLESS OF DATUM REFERENCES.		
UG CHANGE RESTRICTED NO MANUAL CHANGES	REFERENCE	DR	DATE
COPY OF MATH DATA DO NOT SCALE		APVD1 J. COLDSNOW	11JN85
		APVD2 F. HESTON	11JN85
		APVD3 K. GRZENA	25JN85
		APVD4	
		APVD5	
METRIC UNLESS OTHERWISE SPECIFIED, ALL DIMENSIONS ARE IN MILLIMETERS	DRAWING NAME CONN 4F M/P 150		

(2) PROCESS SENSITIVE DIMENSION	DIMENSIONS ENCLOSED IN () INDICATE REFERENCE DIMENSIONS AND NO TOLERANCE LIMITS ARE ESTABLISHED	
R 0.2 MAX	R 0.1 MAX	SHARP CORNER TOLERANCE
DIMENSIONAL RANGE (MM) CHART E1		
FROM TO	0 TO 20	> 20 TO 30
	> 30 TO 70	> 70 TO 100
	> 100 TO 150	> 150 TO 200
	> 200 TO 250	> 250 TO 300
	> 300 TO 400	> 400 TO 500
TOLERANCE UNLESS OTHERWISE SPECIFIED		
	±0.15	±0.2
	±0.3	±0.4
	±0.5	±0.6
	±0.8	±1
	±1.2	±1.6
ANGULAR TOLERANCE ± 2°		

SHEET NUMBER 1 OF 1	DRAWING NUMBER 12059555	DWG STATUS STG REV N/P R C3 -	SIZE A1
------------------------	----------------------------	-------------------------------------	------------